

# Schools

Sibylle Kramer

## Educational Spaces

BRAUN





Address: Weegbree 2, Heerhugowaard, The Netherlands. Client: Municipality of Heerhugowaard.  
Other creatives involved: Dorte Kristensen and Lissette Plouvier. Completion: 2007. Size: 3,020 m<sup>2</sup>.



↑ | Exterior view  
→ | Staircase

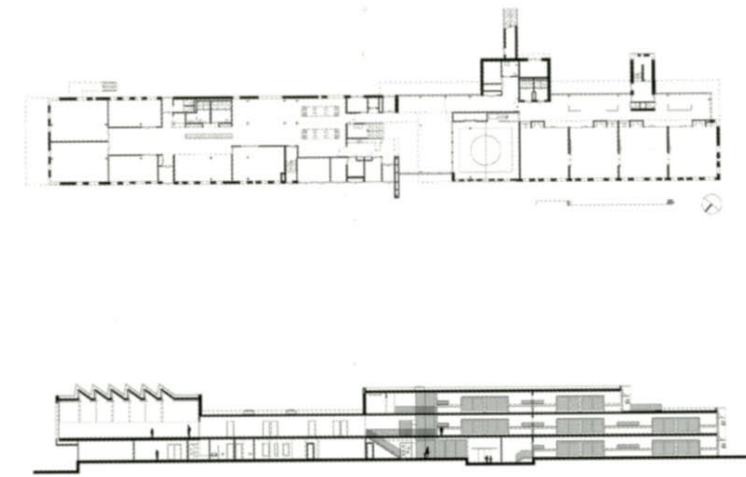
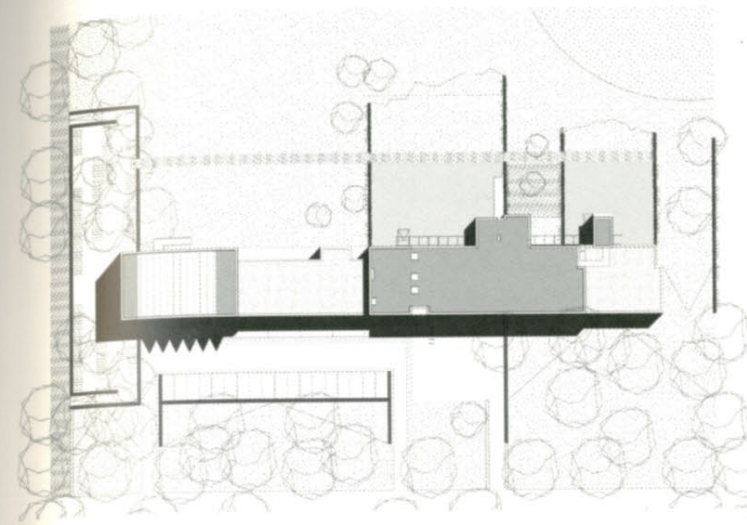
## Daltonschool Columbus

Heerhugowaard

The Multifunctional center Daltonschool Columbus is situated between trees in a large park. The school consists of 14 class-rooms, a day care center and a gymnasium. By placing the auditorium and the playroom in the central space of the building, they become 'the heart' of the organisation. The 'heart' connects three different levels and provides visual and spatial contact between the class-rooms, the day care center and the gymnasium. To moderate daylight in the school, PV cells have been applied in the glass, thus creating an interesting interplay between light and shadow.







↖ | Site plan, sections  
 ↗ | Interior views  
 ↓ | Overall view

