

# ATELIER PRO

Opdrachtgever  
Stichting  
Samenwerkingsschool  
ABVO

Project type  
architecture  
  
Functies  
education, public  
building

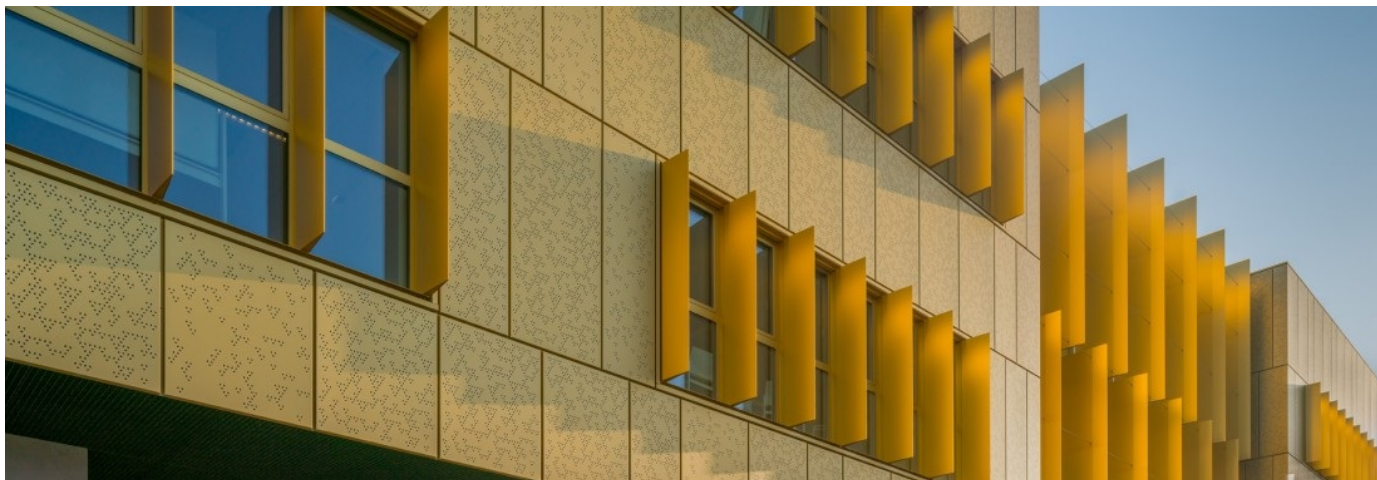
Kosten  
€ 6.378.209,-  
  
7.089 m<sup>2</sup>

Project status  
completed

Periode  
2014 - 2016

Oplevering  
2016

Locatie  
Geertje  
Wielemastraat 1  
Amsterdam  
Netherlands



beeld: atelier pro

## IJburg College 2, Amsterdam

**IJburg College 2 is a new secondary school that accommodates approximately 800 students at VMBO-T and HAVO levels. The aim of the school is to realise a 'High Tech Green' school that fits well with this site.**

### Compact Building

IJburg College's main school is located on IJburg, in Amsterdam. For its extension, a branch of the school will be built on neighbouring Zeeburgereiland. The school's site is surrounded by greenery and water, typical for Zeeburgereiland. Atelier PRO's design comprises a compact building that is adapted closely to the urban design framework. The main concept of the design was developed from a bottom-up approach whereby students, teachers and parents were asked to contribute ideas about the school. This was combined with the school's vision that the shared floors for practical subjects be placed centrally between two departments to create a meeting point. The introduction of a split-level maximizes the limited building volume and facilitates greater spatial connections between the different functions.

### Network of stairs

The school's motto is: 'Learn in a learning community'. This means that everyone contributes to one another's development, and to the development of the school. Centrally placed in the new building will be a large void to bring in light and air, and create

a sense of spaciousness. Suspended in this void is a network of stairs that connects different parts of the school, and provides a social space where people can meet one another. All departments as well as the rooms for practical subjects are organised around this void, which results in a well-structured layout.

### High tech appearance

It seemed appropriate that the building should have a characteristic appearance considering its prominent social function in the neighbourhood. The gold anodised aluminium facade cladding lends the building a striking but harmonious appearance in the neighbourhood, which consists of mainly stone buildings. A dynamic play of light arises on the building, varying depending on the angle of viewing and time of day.

### Custom made concept design

As the appointed client, HEVO initiated the European tender on behalf of IJburg College on the basis of a fixed fee. The selection process began with 47 candidates that were narrowed down in an intermediary stage to five practices, whom HEVO then visited in person. From these five, two finalists were selected. Atelier PRO and the other finalist then conducted feedback sessions with students, parents, experts and the selection committee: this resulted in a true custom-made concept design. This was an innovative way to hold the tender because the client truly invested time and effort in finding the right partner. Using this approach ensures that quality, not price, becomes the deciding factor.

publications  
GreenDeal Scholen

Ontwerpteam  
project architect  
Dorte Kristensen, Karho Yeung

project architect competition  
Dorte Kristensen, Karho Yeung

projectleider  
Eelko Bemener

design team  
Aneta Rymysza, Corine Jongejan,  
Robbert Kleine Schaars,  
Tobias Thoen

Projectteam  
general contractor  
Bouwbedrijf De Vries en Verburg  
B.V.

physics consultant  
Deerns

structural engineer  
IMd Raadgevende Ingenieurs

services engineer  
Nelissen ingenieursbureau

supplier  
Bolidt

project manager  
HEVO

electrical services contractor

# ATELIER PRO

Archdaily